



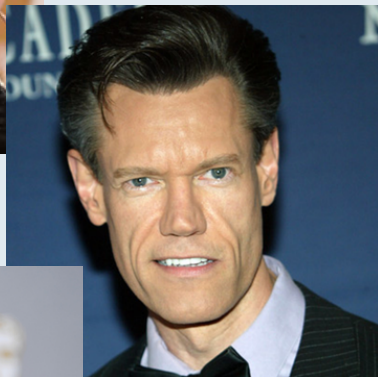
C.H.A.T. SOCIETY

COMMUNICATION HEALTH AND THERAPY

NEWSLETTER

FUNDS FOR APHASIA!

C.H.A.T. has **donated \$1500** to the **Corbett Clinic Client Assistance Fund** to be used towards **therapy** with the **Corbett Aphasia Rehabilitation and Education (CARE) Program**



CELEBRITIES WITH APHASIA

- More than **100,000** Canadians live with **aphasia**
- Among them are celebrities like
 - Sharon Stone
 - Randy Travis
 - Emilia Clark

Did You Know?

The ability to **read** and **write** can be affected following **stroke** or **brain injury**.

ALEXIA

Difficulty **reading** or **comprehending** written material.



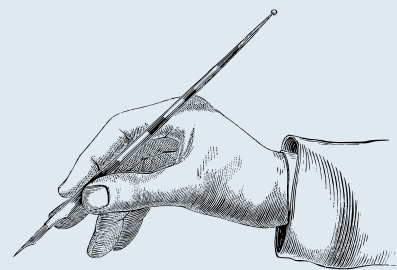
AGRAPHIA

Difficulty **composing written** messages, **spelling**, and/or **copying** words.

Physical Writing Difficulties

Imagine having to learn to write, brush your teeth or cook using your **non-dominant hand**!

The **left side** of your brain controls the **language centre** and the **movement** of your **right side**. Many right handed individuals with aphasia may have **difficulty writing with their dominant hand**.



85%

of people are right handed

DARALYNN'S HAIR MASSACRE

Congratulations to Daralynn for raising a grand total of **\$2400!!!**



THANK YOU
to everyone
who donated!



A huge **THANK YOU** to
Olive Me
for donating a basket valued at \$170



And congratulations to donor
Jennifer Stelfox, the lucky winner of
the basket!

Let's CHAT Entertainment Recommendations: Movies/TV

My Beautiful Broken Brain



The Tragedy of Macbeth

Pan's Labyrinth

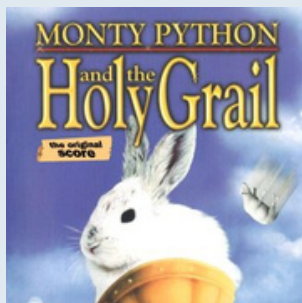


Ozark

Lord of the Rings



Suits



Grease

Monty Python and the Holy Grail



Braveheart



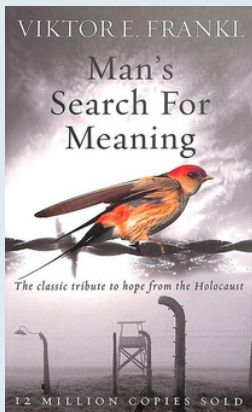
The Man from Snowy River

Let's CHAT Entertainment Recommendations:

Books

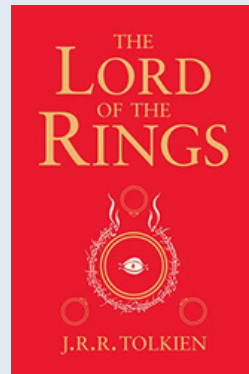
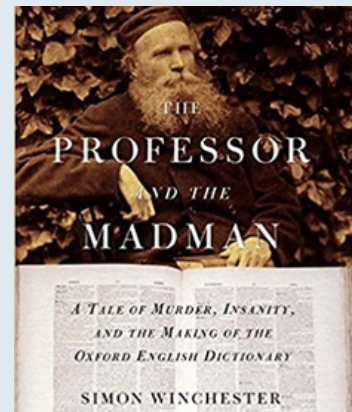
Man's Search for Meaning

By: Viktor E. Frankl



The Professor and the Madman

By: Simon Winchester



Lord of the Rings

By: J.R.R. Tolkien

BECOME A VOLUNTEER!

Volunteers can help with:

- Weekly Let's CHAT zoom sessions
- Committee tasks
- Newsletter
- Fundraising
- [Click here](#) to learn more and contact us



[CLICK HERE](#) to **donate** and/or **become a member!**



Website
chatsociety.ca



Facebook
[CHAT Society](#)



YouTube
[CHAT Society](#)

Aphasia Research Participation Opportunities

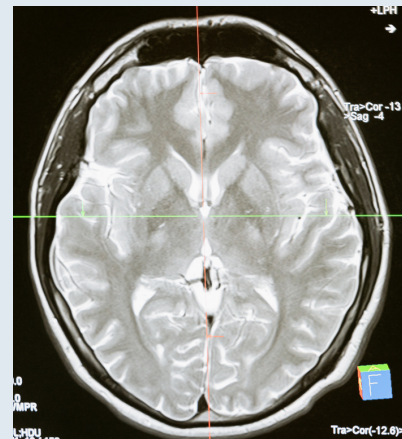
VoiceAdapt

- Can training with a **tablet-based app** **improve language and communication** in people with aphasia?
- Email Esther Kim: esther.kim@ualberta.ca



Looking for individuals who meet the following **criteria**:

- Have **Aphasia** as a result of **left hemisphere stroke**
- Are **at least 6 months post onset**
- Speak **English** as your **primary language**
- Are willing to **commit to the entire study (~13 weeks)**
- Want to **participate in research**



REMAP

- This study is looking at combining the effects of Multimodal Aphasia Therapy with a **brain stimulation** technique called **Transcranial Magnetic Stimulation (TMS)** to help **improve speech after stroke**.
- Email Stroke Robotics and Recovery Laboratory at the Foothills Medical Centre: robotlab@ucalgary.ca

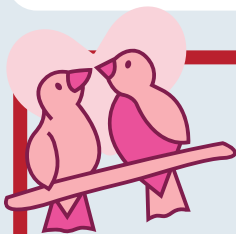
Looking for individuals who meet the following **criteria**:

- Are age **18 or older**
- Are **right handed**
- Have a **non-fluent aphasia**
- Speak **English** as your primary language
- **Do not** have any **contraindications for MRI or TMS** (Pacemaker, heart valve, metal in the head, etc)

COMMUNICATION CORNER: RIDDLES

Need a little break? Test yourself with these fun brain teasers!

1. I **start** with **M**, **end** with **X**, and have a **never-ending** amount of **letters**. What am I?
2. The **more** of this there is, the **less** you see. What is it?
3. What has a **bottom** at the **top**?
4. What kind of **band** never plays **music**?
5. What has many **teeth**, but cannot **bite**?
6. What goes **up** and **down** but doesn't **move**?
7. What **building** has the most **stories**?
8. What **fruit** can you never **cheer** up?
9. What type of **music** do **rabbits** listen to?
10. Why can't a **pirate** ever finish the **alphabet**?



VALENTINE'S DAY SPECIAL



11. What type of **flower** is **kissable**?
12. Why did the **banana** go out with the **fig**?

Turn to the next page for answers!

COMMUNICATION CORNER: RIDDLES

ANSWERS

1. A mailbox
2. Darkness
3. Your legs
4. A rubber band
5. A comb
6. A staircase
7. The library
8. A blueberry
9. Hip hop
10. Because he always gets lost at sea!
11. Tulips
12. Because he couldn't get a date!

***How many did you solve?
Give yourself a pat on the back!***